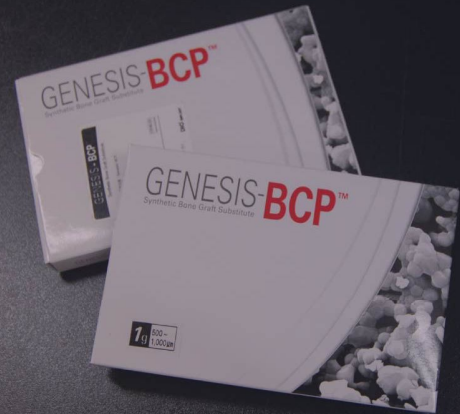
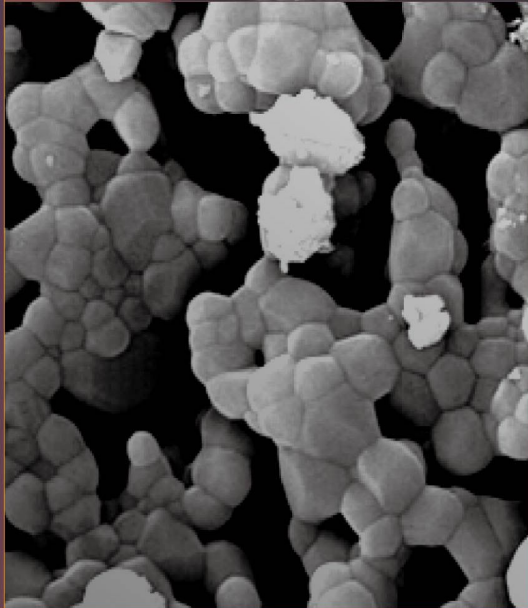
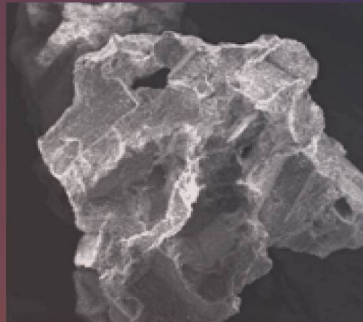


# GENESIS-BCP™

Synthetic Bone Graft Substitute

## Clinical Case

Sinus lifting  
Ridge augmentation  
Extraction site GBR  
GBR  
Sinus graft & GBR



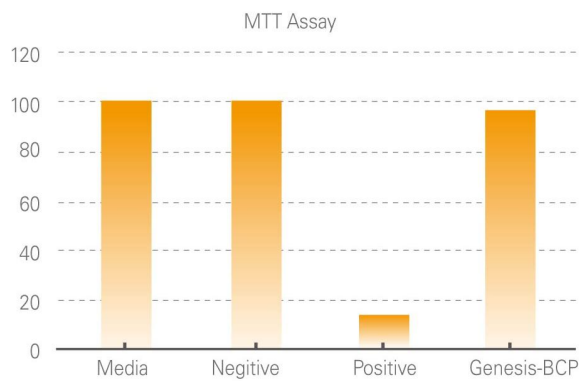
# Genesis-BCP (Synthetic Bone Graft Substitute)

Osteogenesis + Biphasic Calcium Phosphate

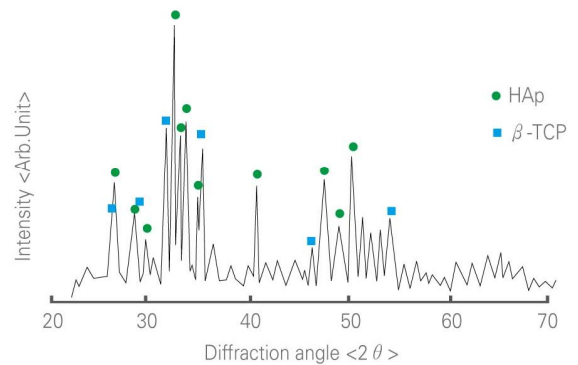


## 100% Synthetic Bone Substitute

- ▶ Very safety
- ▶ No secondary infection
- ▶ High mechanical strength
- ▶ Hydroxyapatite 60% + Beta-TCP 40%



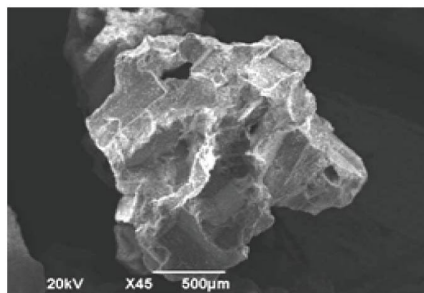
MTT cytotoxicity test



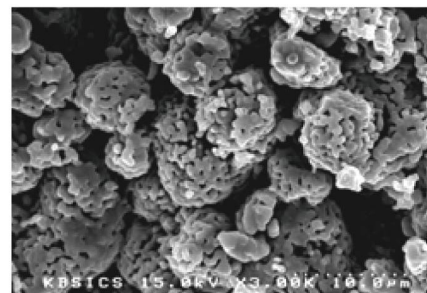
XRD patterns (CuK  $\alpha$ )

## Osteoconductive and Osteogenic for Bioactive

- ▶ Complete interconnected porosity 70%
- ▶ 70% macropores (200 to 600  $\mu\text{m}$ )
- ▶ 30% micropores ( $< 10 \mu\text{m}$ )



Macropore



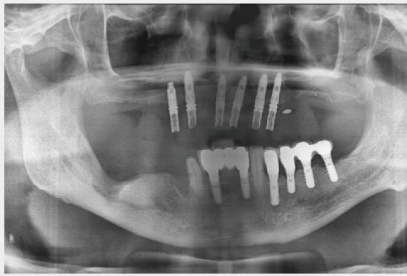
Micropore

Capacity (g)	Granules size ( $\mu\text{m}$ )	100 ~ 500	500 ~ 1,000	1,000 ~ 2,000
	0.25		BG1025	BG5025
0.5		BG1050	BG5050	BG10050
1		BG10100	BG50100	BG100100

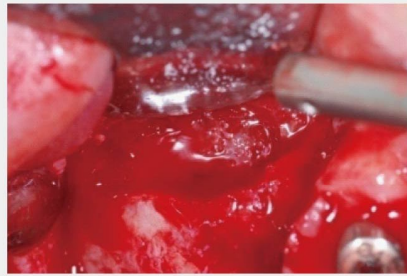
# Applications

## 1 Sinus lifting

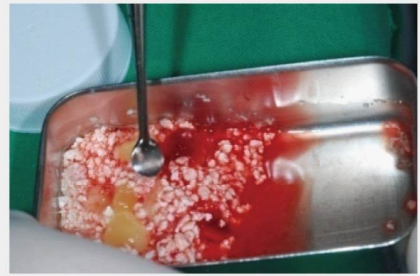
Genesis-BCP Clinical Case



▶ Panoramic view before surgery



▶ Lateral window opening



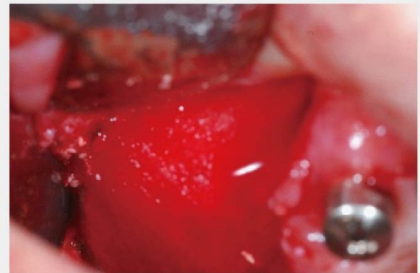
▶ Genesis-BCP mixing with PRF



▶ Bone material filling



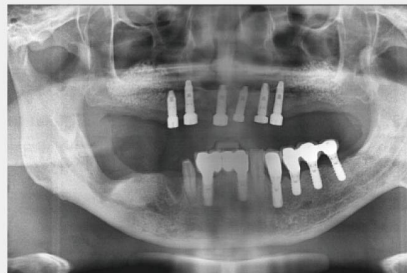
▶ Autogenous bone



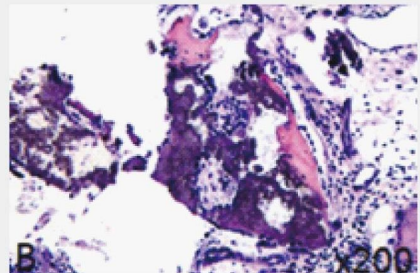
▶ Resorbable membrane



▶ Suture



▶ After sinus graft



▶ Microscopic appearance

## 2 Ridge augmentation

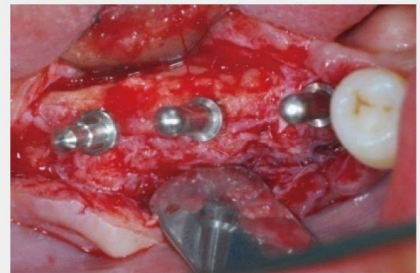
Genesis-BCP Clinical Case



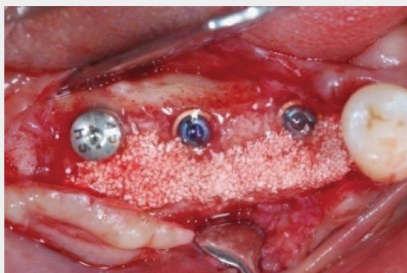
▶ Panoramini view before surgery



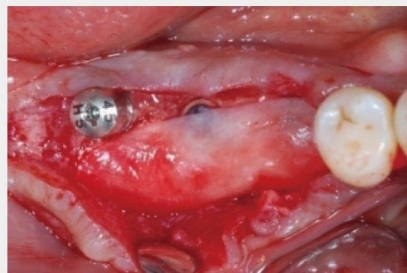
▶ Narrow alveolar ridge



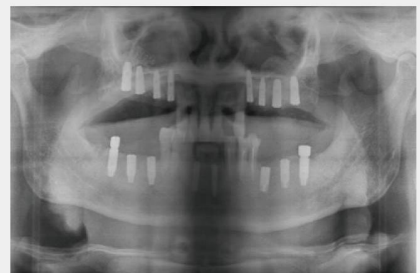
▶ Dehiscence and fenestration



▶ Genesis-BCP grafting



▶ Suture



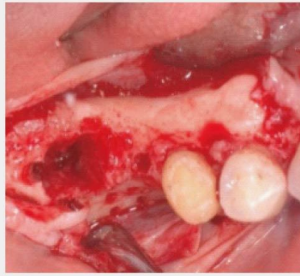
▶ Panoramic view after surgery

3 Extraction site GBR

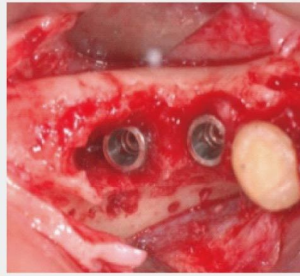
Genesis-BCP Clinical Case



▶ Panoramic view



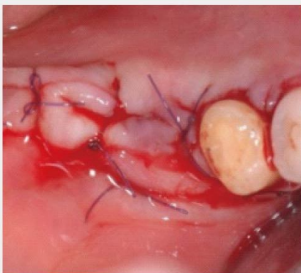
▶ Flap elevation



▶ Fixtures insertion



▶ Genesis-BCP



▶ Suture



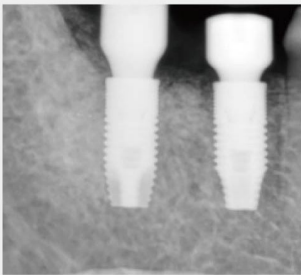
▶ After implantation



▶ Second surgery



▶ Suture



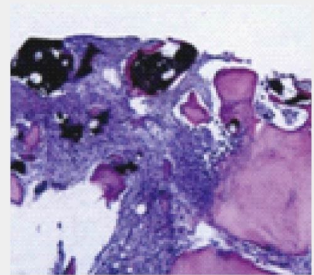
▶ Standard view



▶ Crown cementation



▶ Panoramic view after surgery



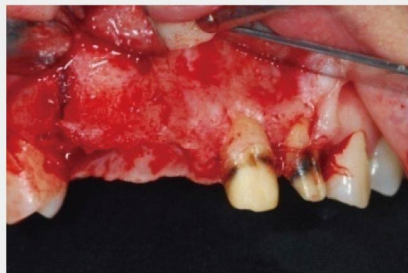
▶ Histologic appearance

4 GBR

Genesis-BCP Clinical Case



▶ Panoramini view before surgery



▶ Narrow alveolar ridge



▶ Dehiscence and fenestration



▶ Genesis-BCP grafting



▶ Suture



▶ Panoramic view after surgery

## 5 GBR

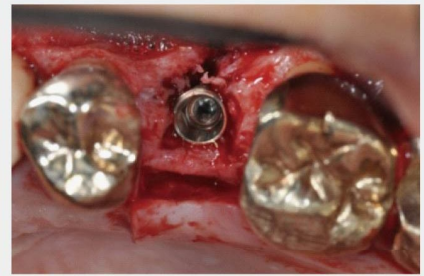
Genesis-BCP Clinical Case



▶ Panoramic view before operation



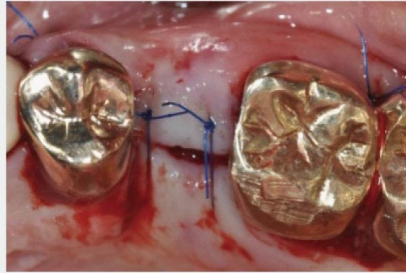
▶ Extraction site of premolar



▶ Dehiscence after implantation



▶ Genesis-BCP graft



▶ Suture



▶ After operation

## 6 Extraction site GBR

Genesis-BCP Clinical Case



▶ Panoramic view before surgery



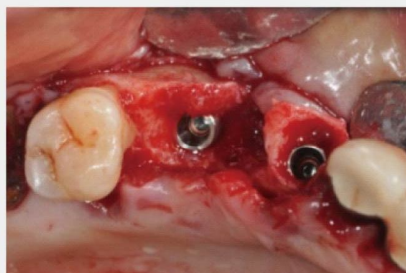
▶ Extraction sites



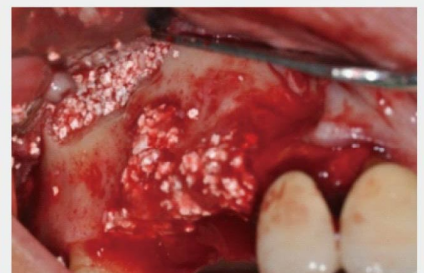
▶ Flap elevation



▶ Lateral window opening



▶ Implants insertion



▶ Sinus graft and GBR



▶ Fibrin glue tissue adhesive



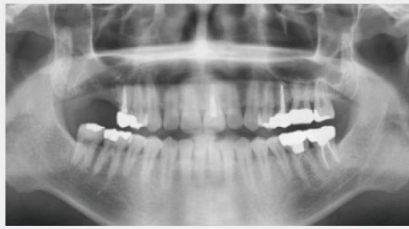
▶ Absorbable membrane



▶ Panoramic view after surgery

## 7 Sinus graft & GBR

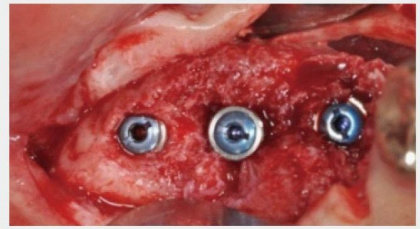
Genesis-BCP Clinical Case



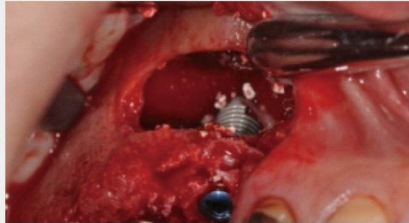
▶ Panoramic view before surgery



▶ Lateral window opening



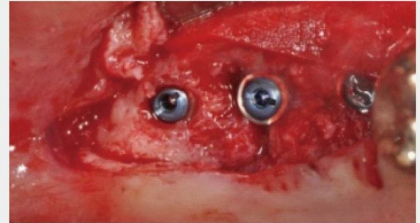
▶ Implant Insertion



▶ Maxillary sinus (non-filled)



▶ Sinus graft and GBR



▶ Absorbable membrane



▶ Memb. attaching with fibrin glue



▶ Suture



▶ Panoramic view after surgery

## 8 Sinus graft

Genesis-BCP Clinical Case



▶ Panoramic view before surgery



▶ Ration site



▶ Extraction and flap elevation



▶ Lateral window opening



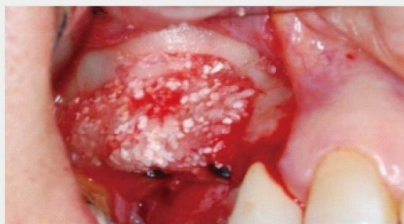
▶ Implant insertion



▶ Genesis-BCP mixed with fibrin glue



▶ Implant placed into sinus



▶ Genesis-BCP filling



▶ After surgery